



Thomas Parker England 1884



Carthness Steamer



Jamais Contente 1899



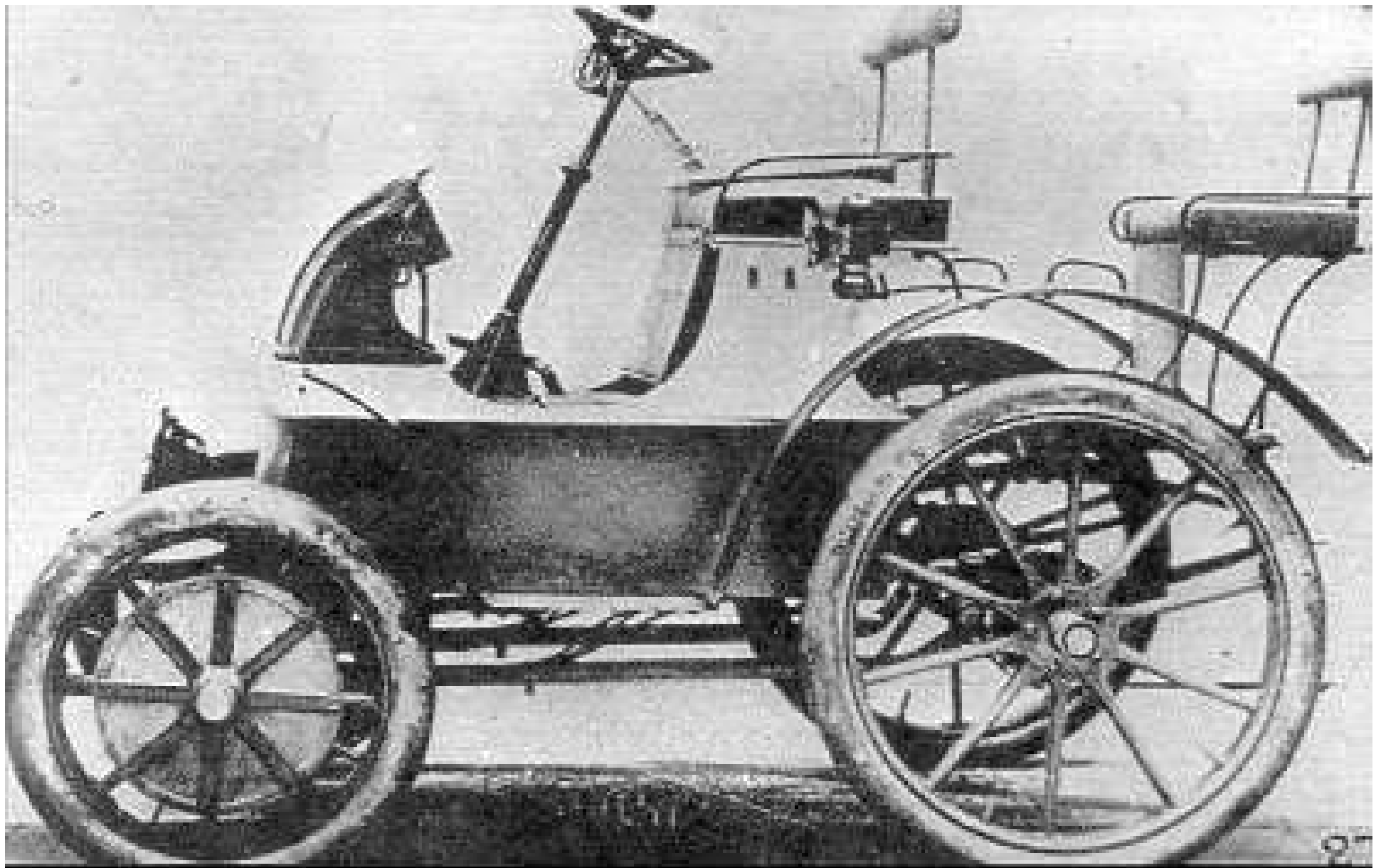
Racing



VW Beetle



911 70's

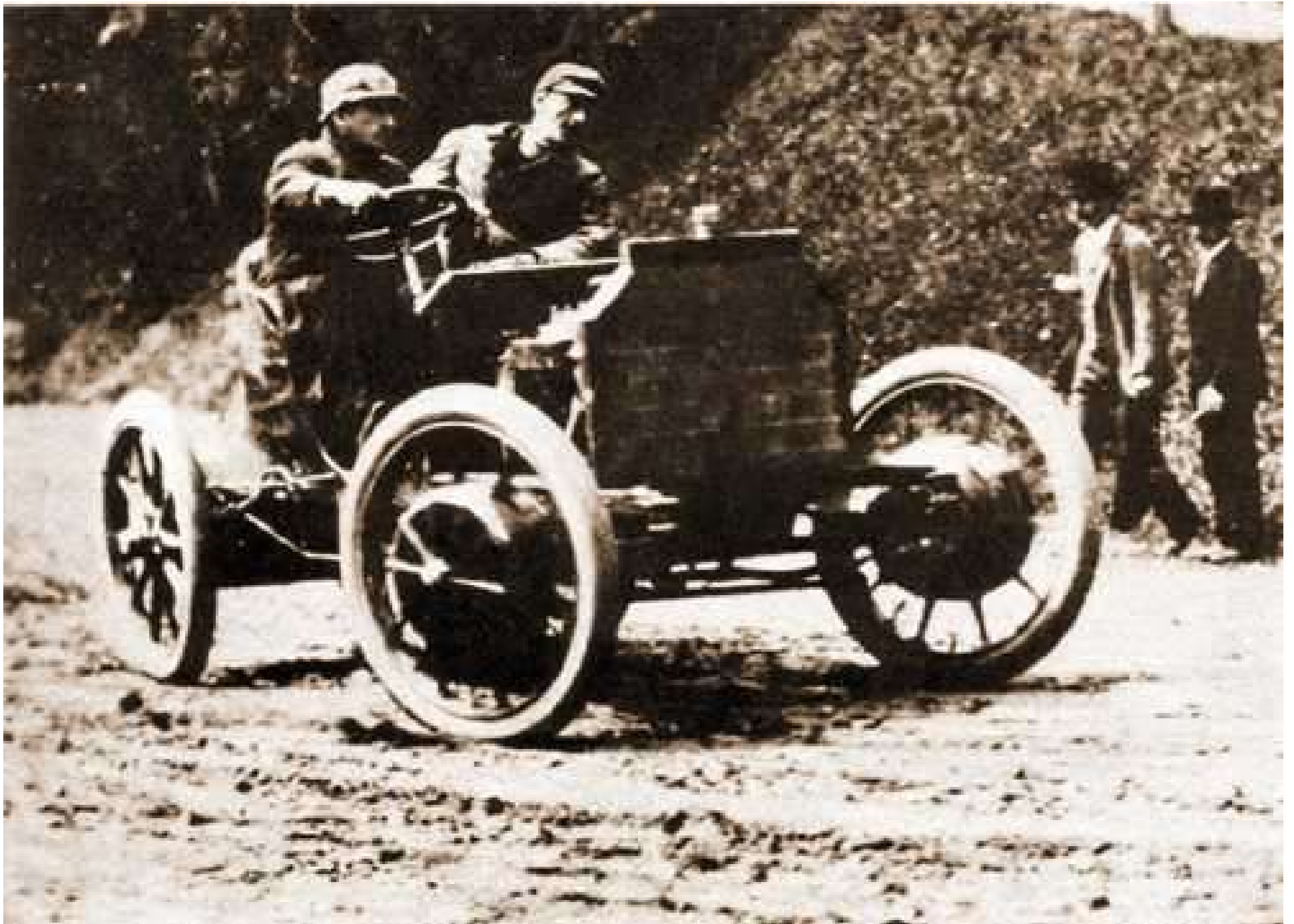


The early 1900's Lohner-Porsche, originally electric-powered, then with an internal combustion engine powering hub-mounted electric motors.

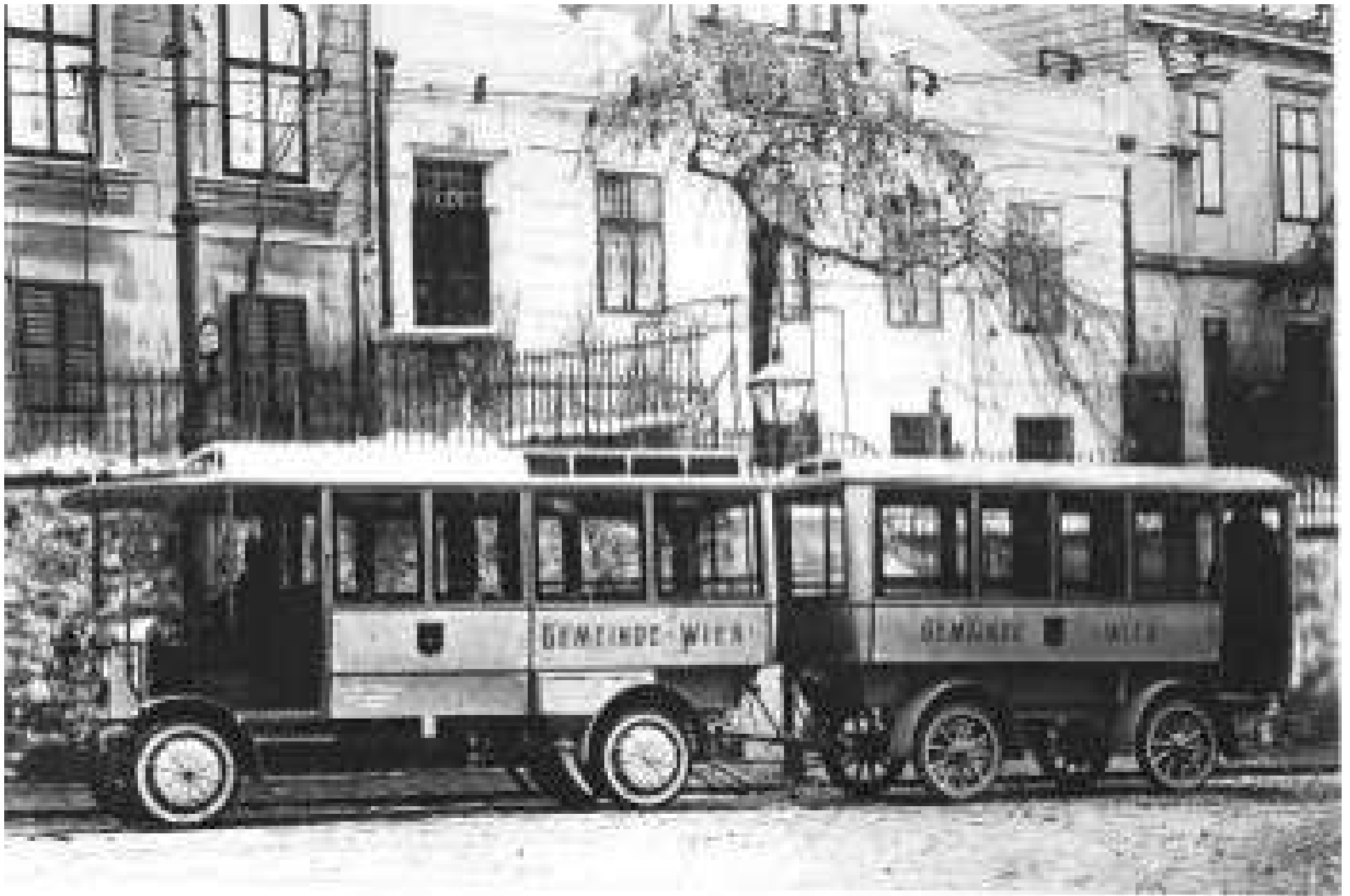
Lohner Porsche 2 wheeler open



Lohner Porsche Electric 2 wheel hood



Porsche hbybrid car1 racer



Lohner Porsche bus Vienna



Property of the  
Western Reserve Historical Society

1916 Owen Magnetic



Detroit Electric 1915



Rev a



1912 Cadillac



Think City



Denmark electric cars and wind



Mars 2



Mars front battery



Mars back battery



Porsche portrait



Enfield 1970's



Ford Commuta + Twiggy



*Copyright S. Morlière*

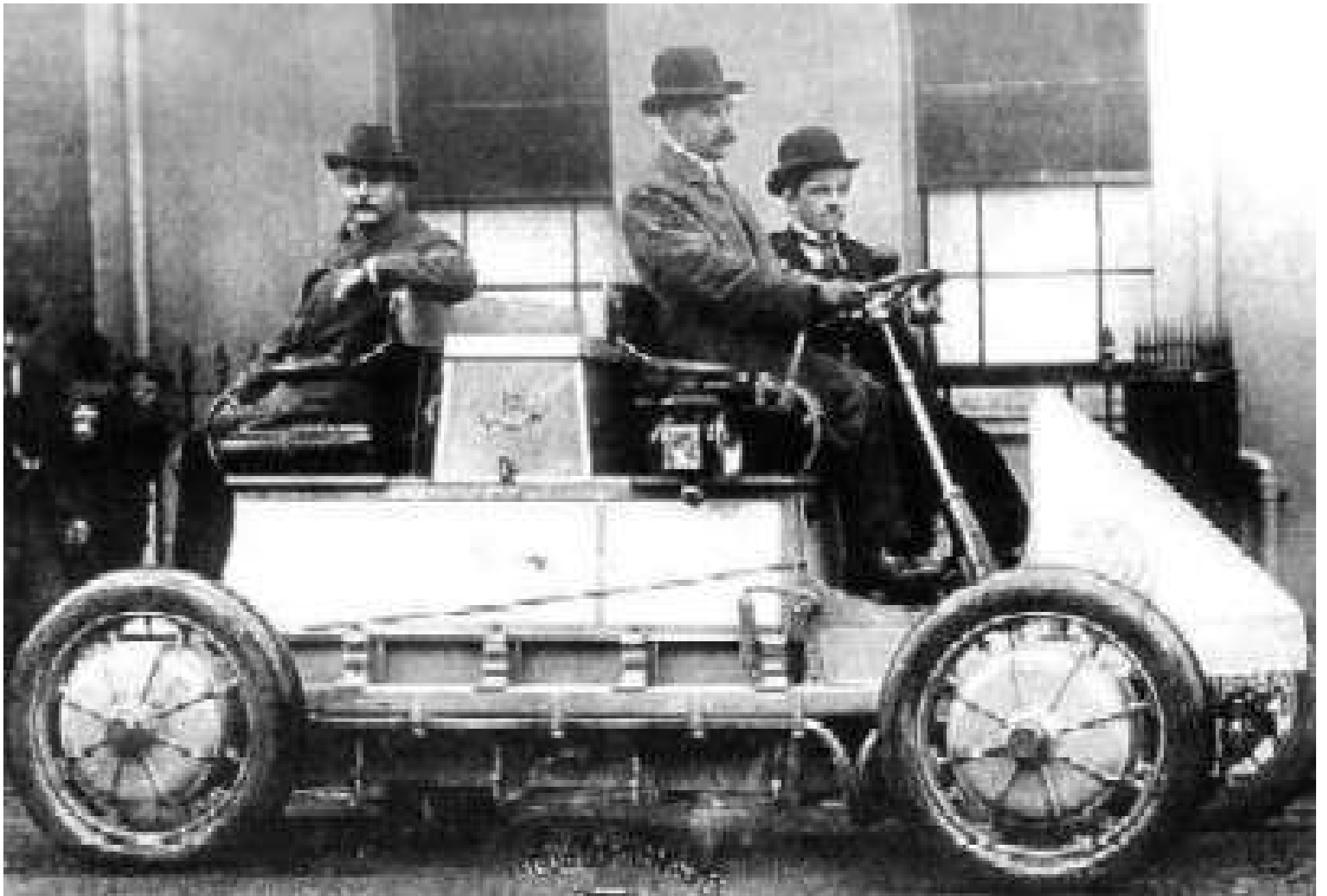
1971 Renault 12 Gordini 13



Subaru Stella



TEVan 425



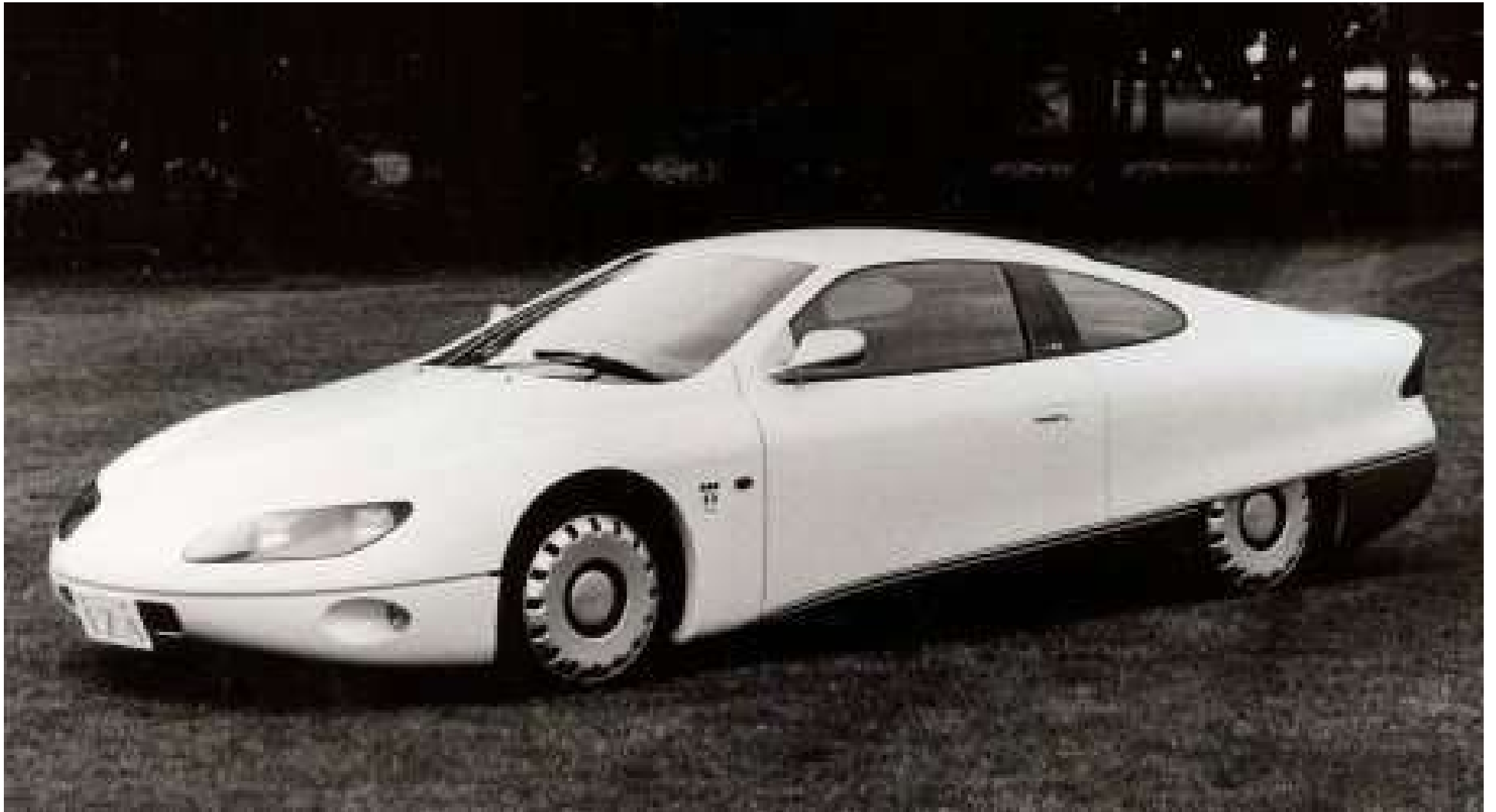
4x4 Lohner Porsche 2



Henney Kilowatt red



EV1 silver



Iza bw 3



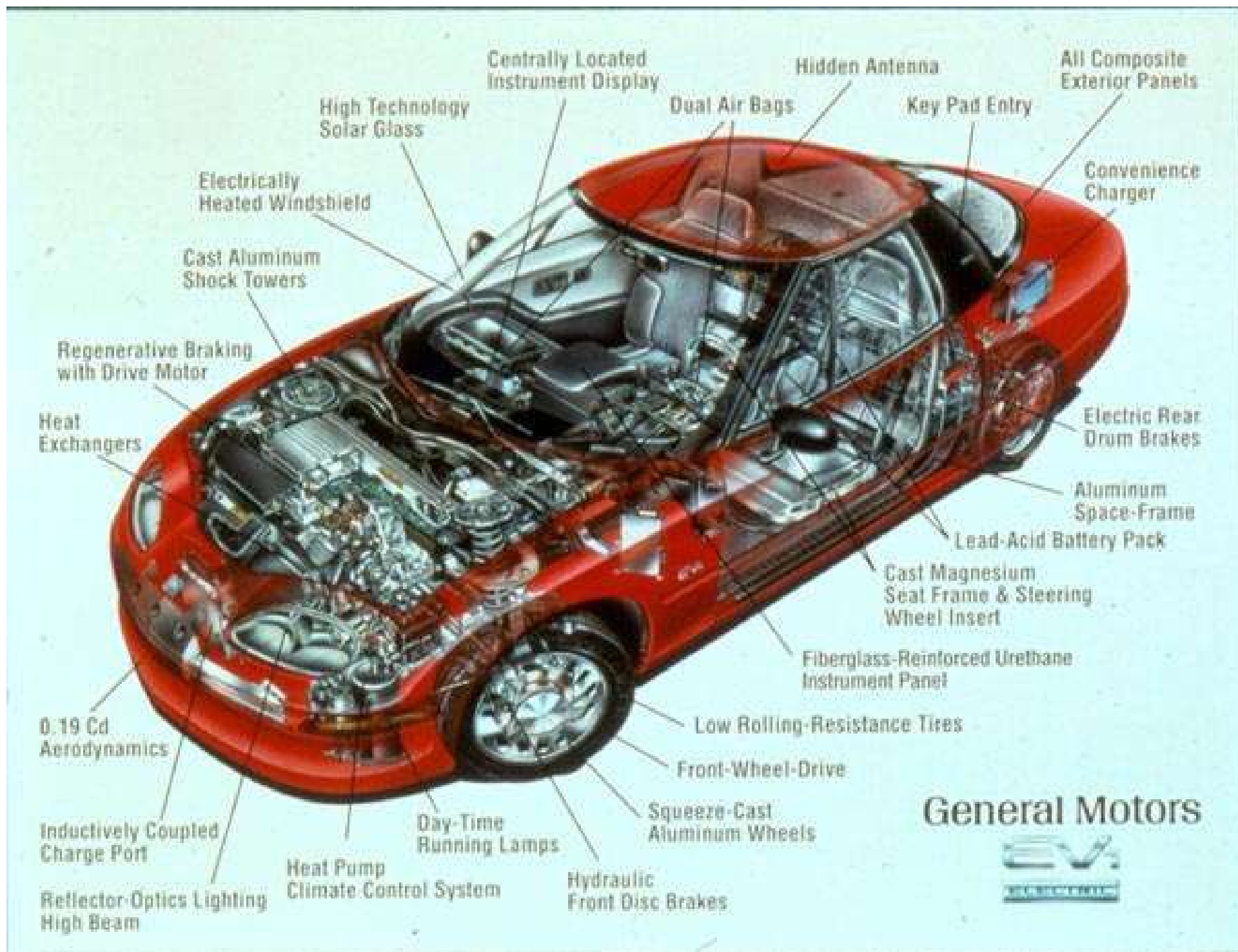
EV1 side



Ford Ranger EV



Nissan Altra EV



EV1 cutaway



ECOmmodore ayers



Trefpunkt Z Hotzenblitz 1



Hoppecke nicad cutaway



Clooney Tango



MiEV



Elicca



Chevy Volt



BYD F3DM plug in hybrid



Think Nordic



Modlec UPS



**AFS Trinity SUV**



AFS Trinity front



Linc Volt



Wrightspeed



Qld Commuter



Qld Commuter



Volta Battery



Large Format Battery



Large Format Battery 2



Linc Volt no engine



GM200 Precept 2 80 mpg



1979 Sebring Vanguard CitiCar



AFS Trinity front 250



AFS Trinity side 250



BYD E6 China



CitiCar side



Ford comuta



GM 2000 Precept 2 80 mpg