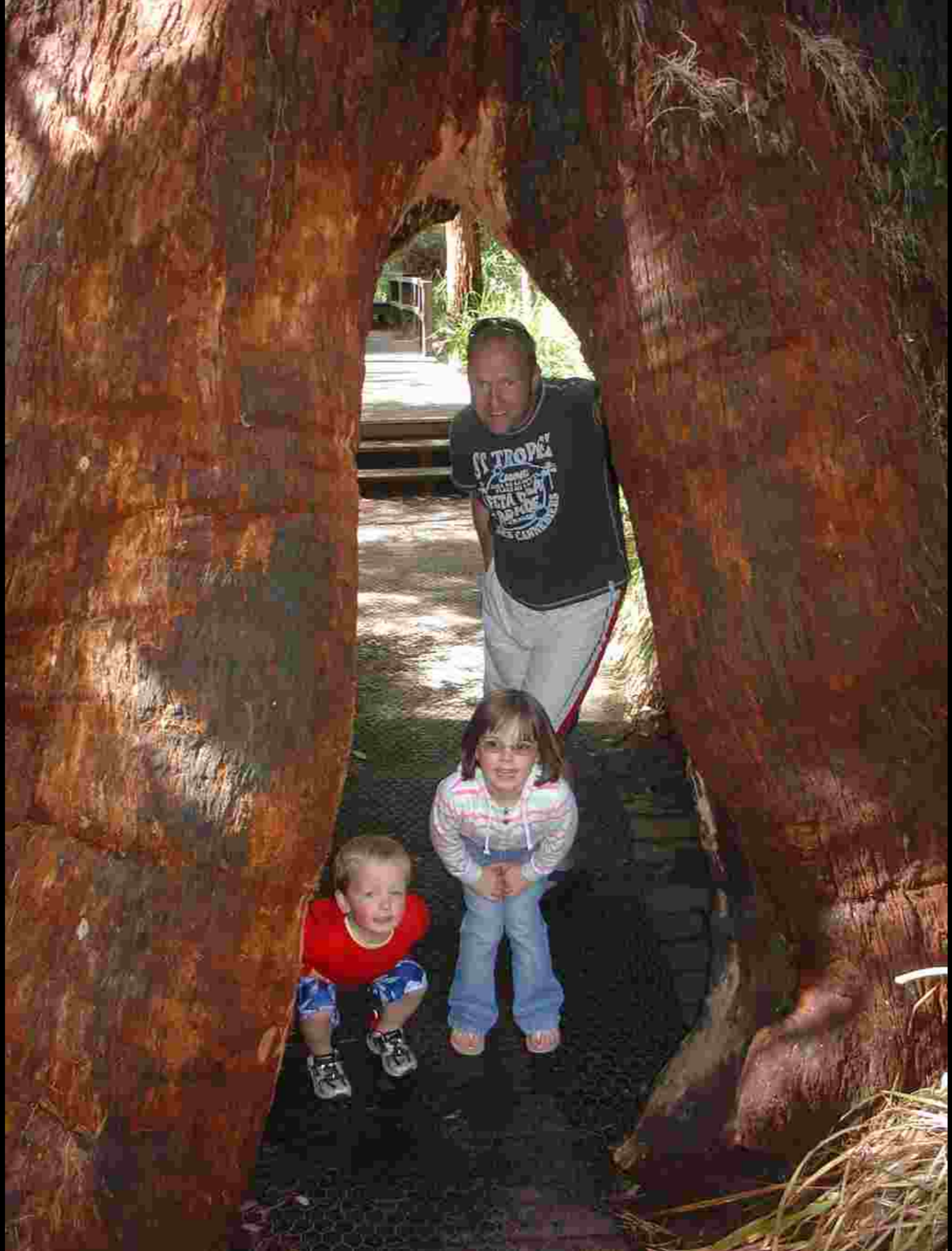




# PHILLIP JOHNSON

SUSTAINABLE LANDSCAPE  
SYSTEMS

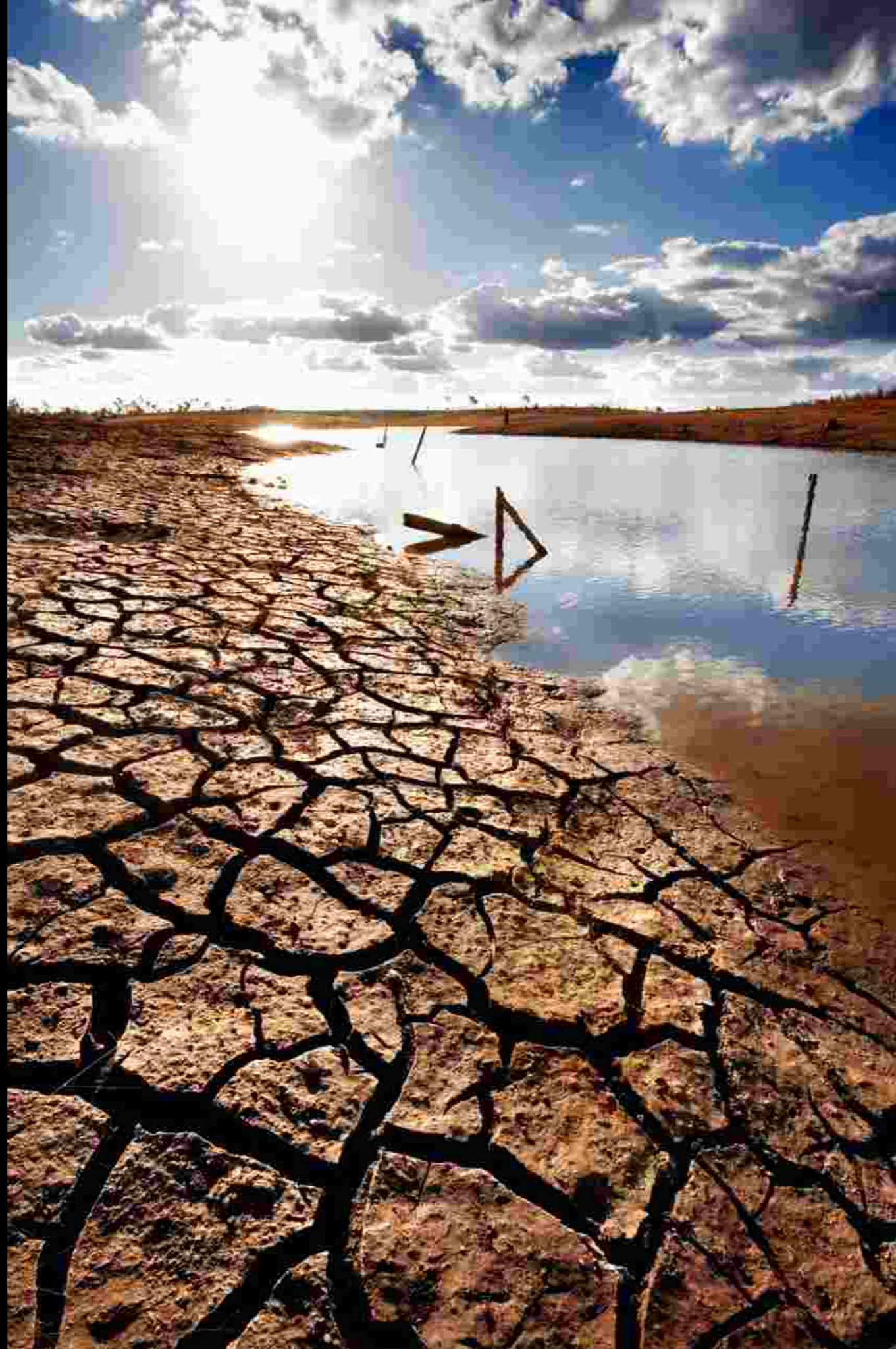




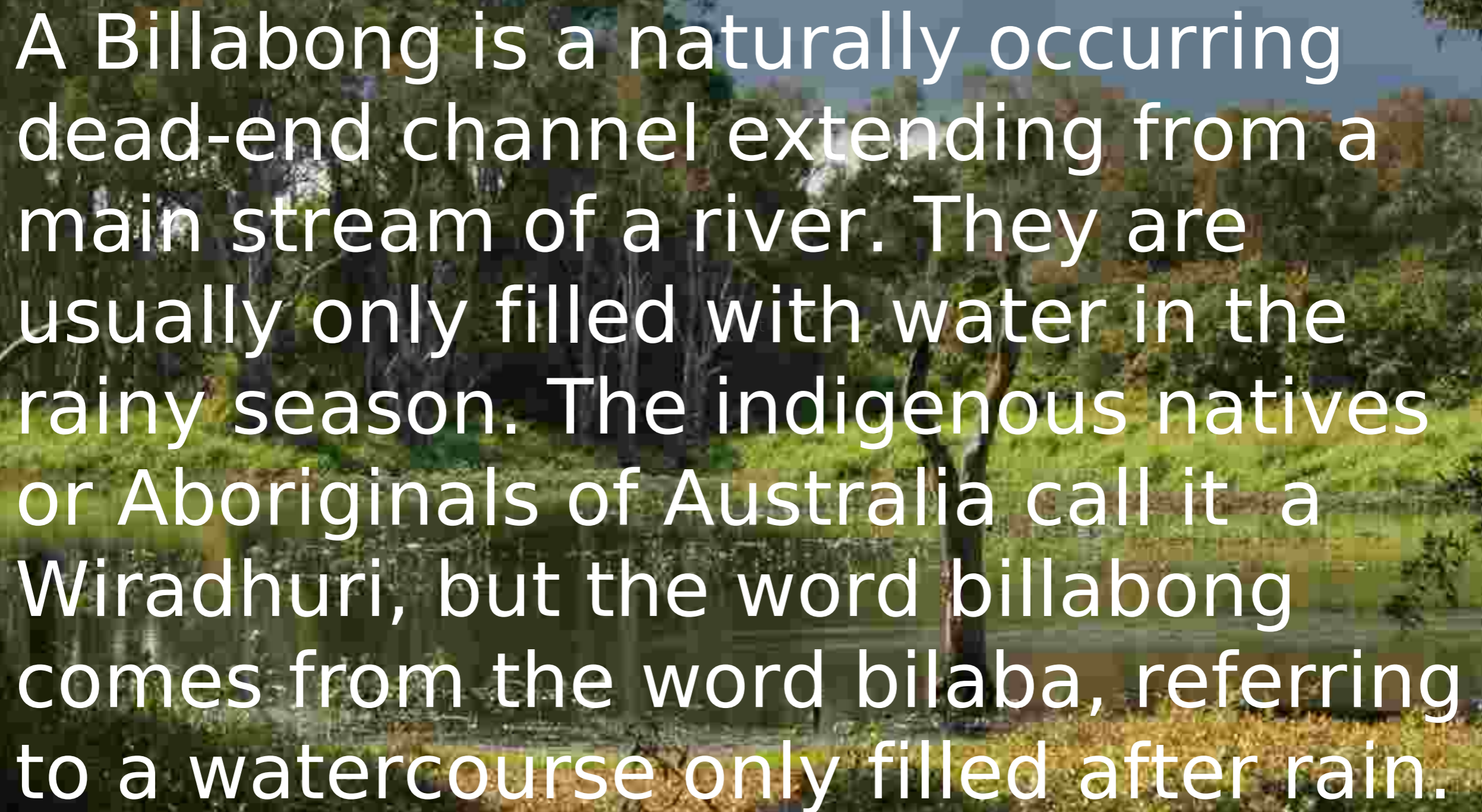








Current  
Dam  
Levels  
33.6%

A lush green landscape with a river and trees. The text is overlaid on the image.

A Billabong is a naturally occurring dead-end channel extending from a main stream of a river. They are usually only filled with water in the rainy season. The indigenous natives or Aboriginals of Australia call it a Wiradhuri, but the word billabong comes from the word bilaba, referring to a watercourse only filled after rain.











DP 6,7,8,9,10,11

DP 2,3

DRY CREEK BED

DP 4,5

DRY BILLABONG

TOP UP

DRIP IRRIGATION

PUMP

VEGIES & TO SELECTED GARDEN AREAS

OVERFLOW

20KL TANK

TOP UP

SMALL BILLABONG

DP 1,12,13,14,16

OVERFLOW

OVERFLOW

5KL TANK

DP 15

OVERFLOW

STORMWATER



PYRENEES STONE



FULTON

### WATER DIAGRAM:



PHILLIP JOHNSON  
SUSTAINABLE LANDSCAPE SYSTEMS



PHILLIP JOHNSON  
SUSTAINABLE LANDSCAPE SYSTEMS















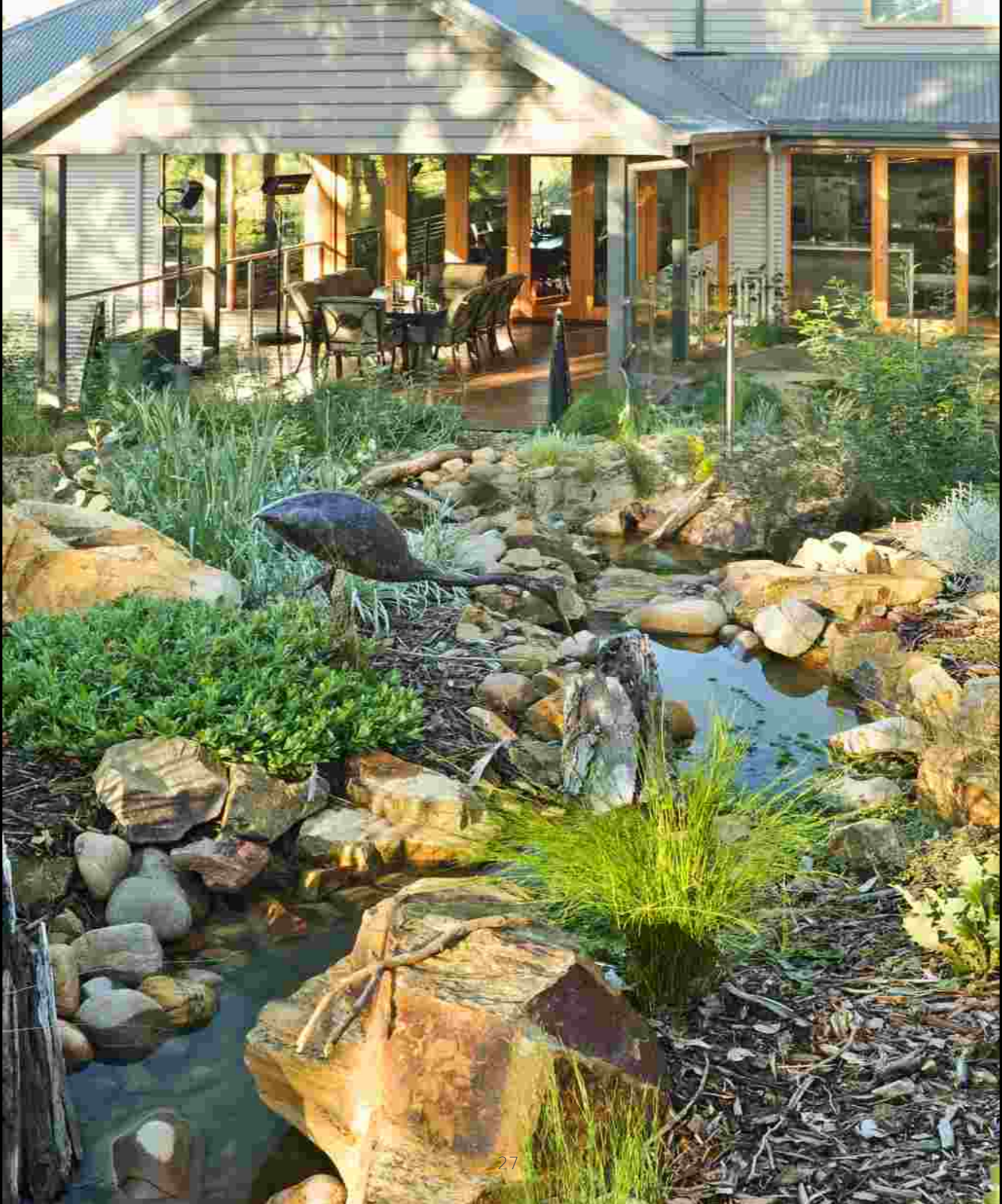






**PHILLIP JOHNSON**  
SUSTAINABLE LANDSCAPE SYSTEMS























PHILLIP JOHNSON  
SUSTAINABLE LANDSCAPE SYSTEMS







**PHILLIP JOHNSON**  
SUSTAINABLE LANDSCAPE SYSTEMS











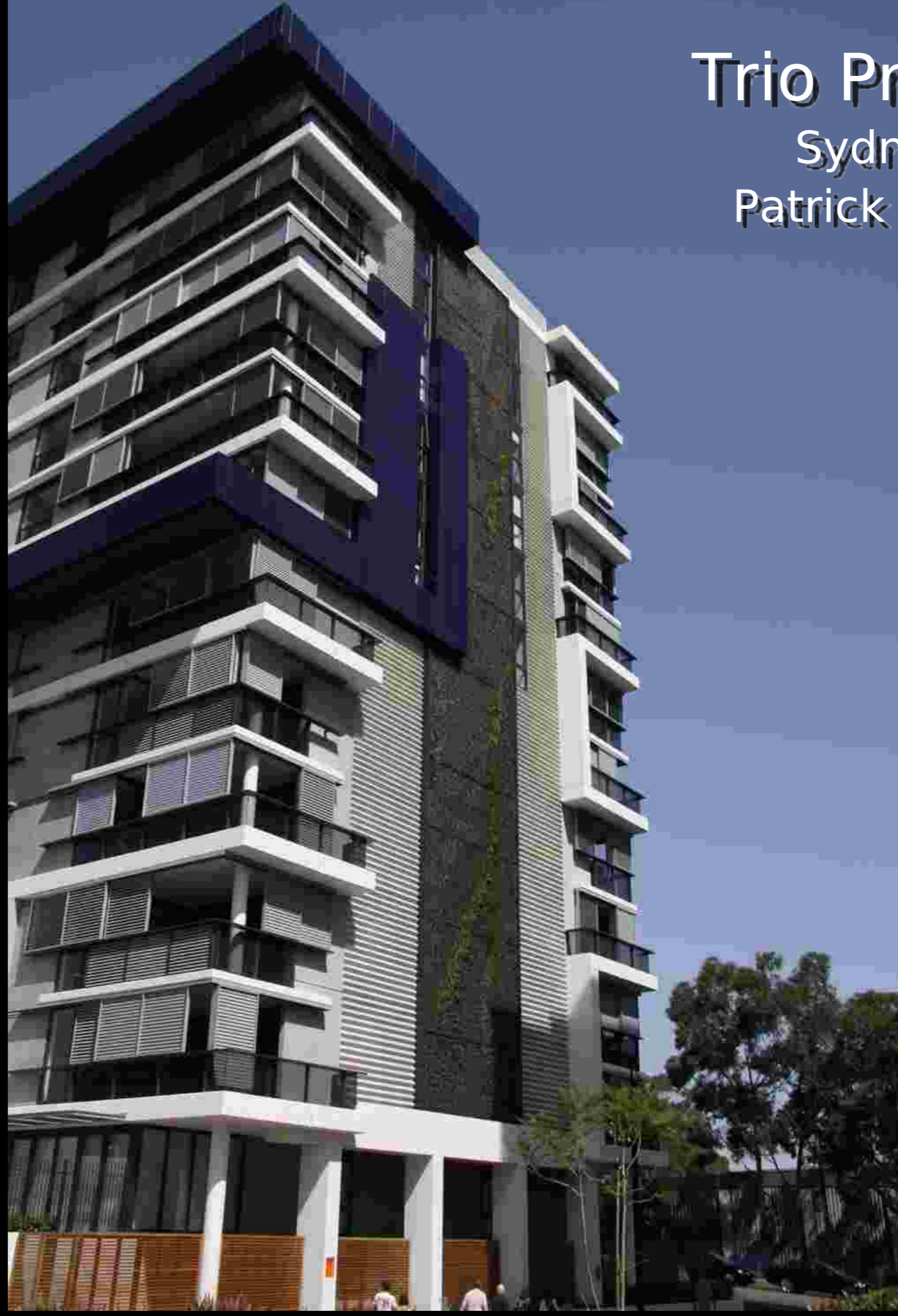


PHILLIP JOHNSON  
SUSTAINABLE LANDSCAPE SYSTEMS

**THE VERTICAL WALL**  
MELBOURNE CENTRAL  
Patrick Blanc

# Trio Project

Sydney  
Patrick Blanc

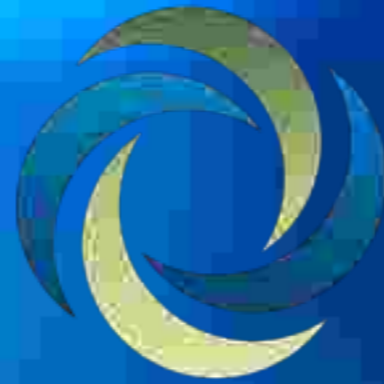




# Trio Project

Sydney  
Patrick Blanc

- 4500 Plants, 68 Species (tubes )
- 3 Months Growth
- 36,000 lt water tank
- Water Collected onsite



# PHILLIP JOHNSON

## SUSTAINABLE LANDSCAPE SYSTEMS